

# MONTHLY MEMBERSHIP PROGRESS REPORT

District 325 L

Results as of: 1/31/2024

GMT:

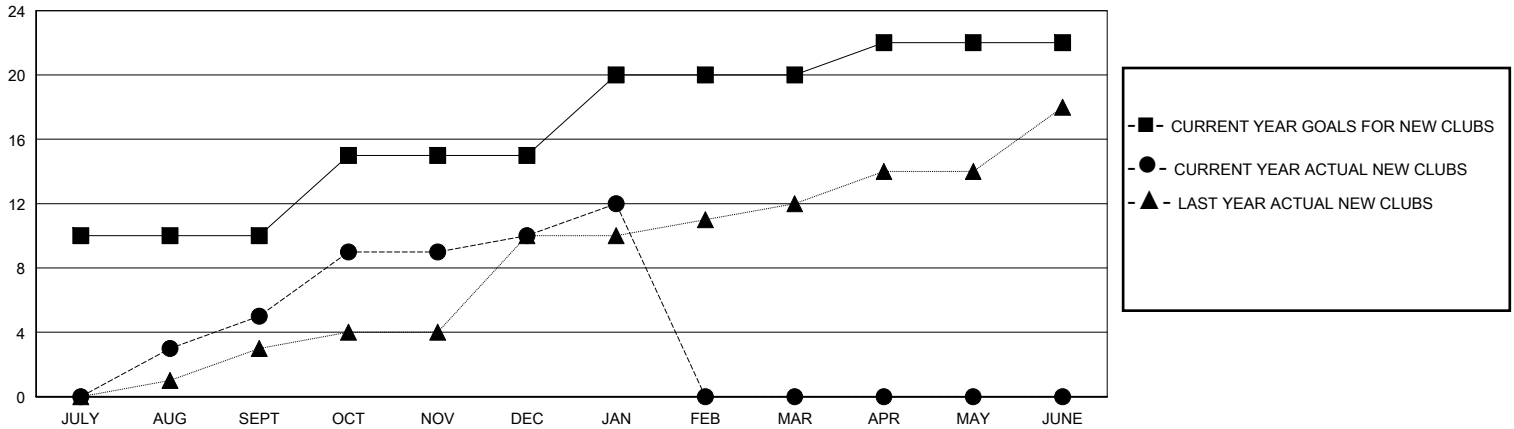
LOCATION NEPAL

GMT CA

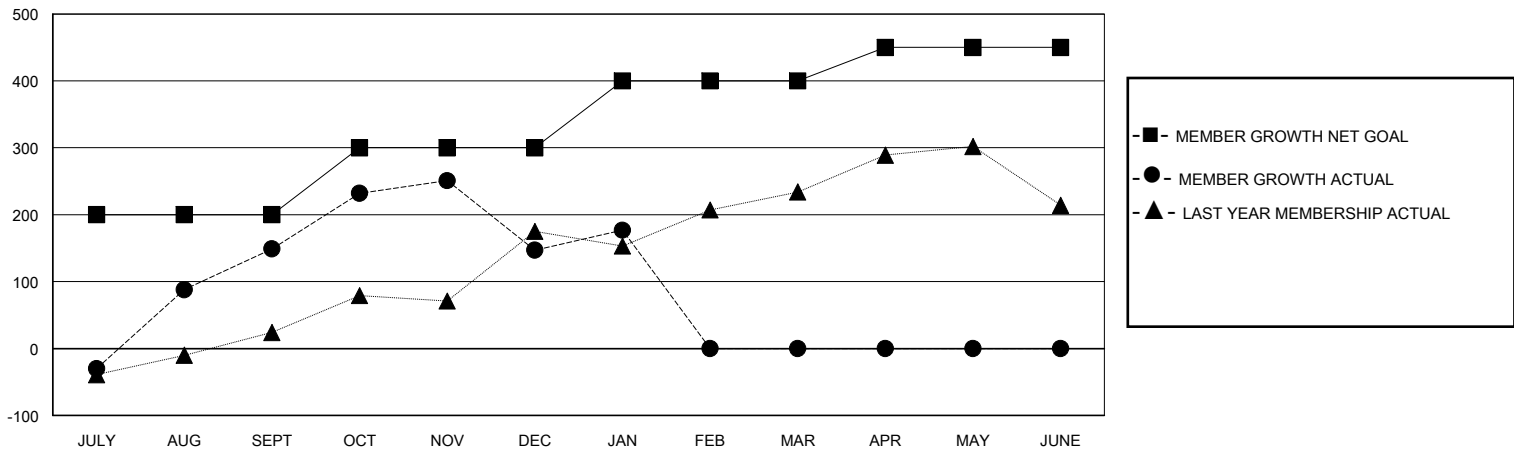
Clubs			
RESULTS FOR 2023-2024			
QUARTER	NEW CLUB GOAL	NEW CLUBS	DROPPED CLUBS
JULY/AUG/SEPT	10	5	2
OCT/NOV/DEC	5	5	5
JAN/FEB/MAR	5	2	1
APR/MAY/JUNE	2	0	0

Members			
RESULTS FOR 2023-2024			
QUARTER	MEMBER GROWTH NET GOAL	MEMBER GROWTH ACTUAL	DROPPED MEMBERS ACTUAL (including transfers)
JULY/AUG/SEPT	200	271	115
OCT/NOV/DEC	100	174	171
JAN/FEB/MAR	100	108	56
APR/MAY/JUNE	50	0	0

GOALS AND ACTUAL NEW CLUBS CUMULATIVE



GOALS AND ACTUAL MEMBERS CUMULATIVE



DROPPED CLUBS: 8

64 CLUBS OF 112 ADDED 1 OR MORE NEW MEMBERS

GENDER DISTRIBUTION

MALE 1,849 (71.12%)  
FEMALE 742 (28.54%)

DROPPED MEMBERS

DECEASED	2
CLUB CANCELLED	117
OTHER	223
<b>TOTAL</b>	<b>342</b>

[CLICK HERE FOR CUMULATIVE MEMBERSHIP DATA](#)

TOTAL FAMILY UNIT MEMBERS	1,860
FAMILY MEMBERS PAYING HALF DUES	1,286